



Empowered lives.  
Resilient nations.



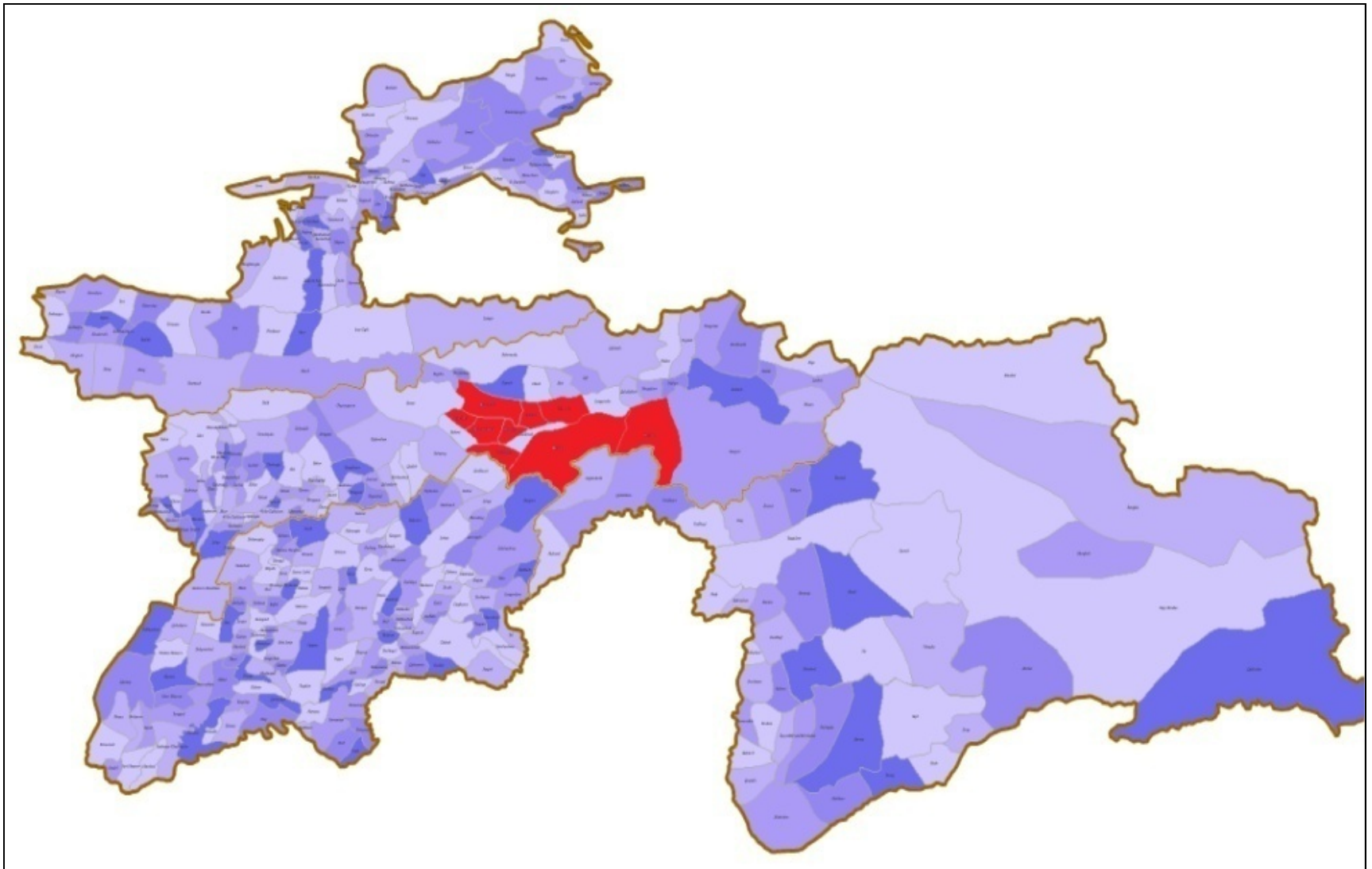
---

# Recovery Activities After Rasht Earthquake

---

**REACT Meeting, September 5, 2012**

## Districts affected by the earthquake on 13 May 2012





Empowered lives.  
Resilient nations.

# Rasht valley

A 5.7 Richter scale earthquake occurred on the night of May 13<sup>th</sup>, 2012 in Tavildara district, overall affecting three districts in Rasht valley.

| District  | Damage info        |         |                     |  |
|-----------|--------------------|---------|---------------------|--|
|           | Residential houses |         | Population affected | Other damage   |
|           | destroyed          | damaged |                     |  |
| Rasht     | 5                  | 11      | 130                 | 1 school destroyed, 37 cattle killed, 2 light vehicles, 1 truck, 8 auxiliary buildings are destroyed, 1 auxiliary building destroyed |
| Tavildara | 47                 | 46      | 1,750               | 1 school destroyed, 5 damaged  |
| Nurobod   | 31                 | 219     | 651                 |  |
| Total     | 83                 | 276     | 2,531               |  |



Empowered lives.  
Resilient nations.

# Rasht valley: Immediate Response Provided

| Type of assistance   | Districts                 |                           |                         | Total                     | Comments   |
|--|---------------------------|---------------------------|-------------------------|---------------------------|--|
|  | Tavildara                 | Rasht                     | Nurobod                 |                           |  |
| Government of Tajikistan   |                           |                           |                         |                           |  |
| Cash distributed   | 162,000 TJS<br>(\$33,750) | 88,000 TJS<br>(\$18,257 ) | 18,000 TJS<br>(\$3,735) | 256,000 TJS<br>(\$53,112) | House destroyed - 5,000 SMN (1,040 USD)<br>House damaged - 3,000 SMN (625 USD)<br>House affected - 1,000 SMN (210 USD) |
| Tents  | 100                       | 20                        |                         | 120                       |  |
| Pipes/D-110 (meters)   | 100                       |                           |                         | 100 meters                |  |
| Wheat Flour (MT)   | 15                        | 3                         | 3                       | 21 MT                     |  |
| Vegetable Oil (liters)   | 1500                      | 300                       | 100                     | 1900 liters               |  |
| Rice (MT)  | 7,75                      | 0,75                      | 1,5                     | 10 MT                     |  |
| Sugar (MT)   | 3,75                      | 0,75                      | 1,5                     | 6 MT                      |  |
| Macaroni (MT)  | 1,5                       | 0,3                       | 0,1                     | 1,9 MT                    |  |
| Red Crescent Society of Tajikistan                                 |                           |                           |                         |                           |  |
| NFI family sets (Kitchen sets, Hygiene sets, blankets, mattresses) | 65                        | 8                         | 20                      | 93 kits                   |  |
| Psycho- social support to affected population in shock             |                           |                           |                         |                           |  |
| World Health Organization through the Ministry of Health           |                           |                           |                         |                           |  |
| Emergency Trauma Kits  | 6                         | 4                         |                         | 10 kits                   |  |



## Recovery activities in Rasht

- Total 39 houses are considered damaged in Langarak village
- Two new houses built in new location and the owners are moving in soon
- Construction materials are delivered to 3 other households
- Land has been allocated to 32 other families in the village of Kalai Surkh
- Construction materials are delivered to 7 families in Kuloba village
- 50% of construction materials are delivered to 2 families in Khosa village
- Food aid was delivered by WFP and tents and non food items supplied by RCST and IFRC





Empowered lives.  
Resilient nations.

## Recovery activities in Tavildara and Nurobod

---

- Total 150 families are listed for relocation to Kumsangir and Panj districts
- 40 families must be evacuated and evacuation of 80 families on volunteer basis
- 37 families moved to Kumsangir and 8 to Panj district receiving land and construction materials
- 35-40% of houses are completed
- The relocated families are entitled to special loan and 3000 somoni



Empowered lives.  
Resilient nations.

## Provision of Construction materials

---

### Kumsangir:

- 275 ton cement
- 259 m<sup>3</sup> timber
- 2606 pcs galvanized sheets
- 37 ton armature

### Panj:

- 66 ton cement
- 56 m<sup>3</sup> timber
- 616 pcs galvanized sheets
- 8.3 armature





Empowered lives.  
Resilient nations.

## Strengthening and Reconstruction of Tavildara District Hospital

---

- Joint assessment of the hospital conducted by Tavildara District Government and CoES
- Total damage recovery in Somoni 900000
- Tender was announced on 30<sup>th</sup> August with the deadline on 13<sup>th</sup> September

Following sections are recovered:

- Maternity ward
- Infectious diseases clinic
- X-ray room

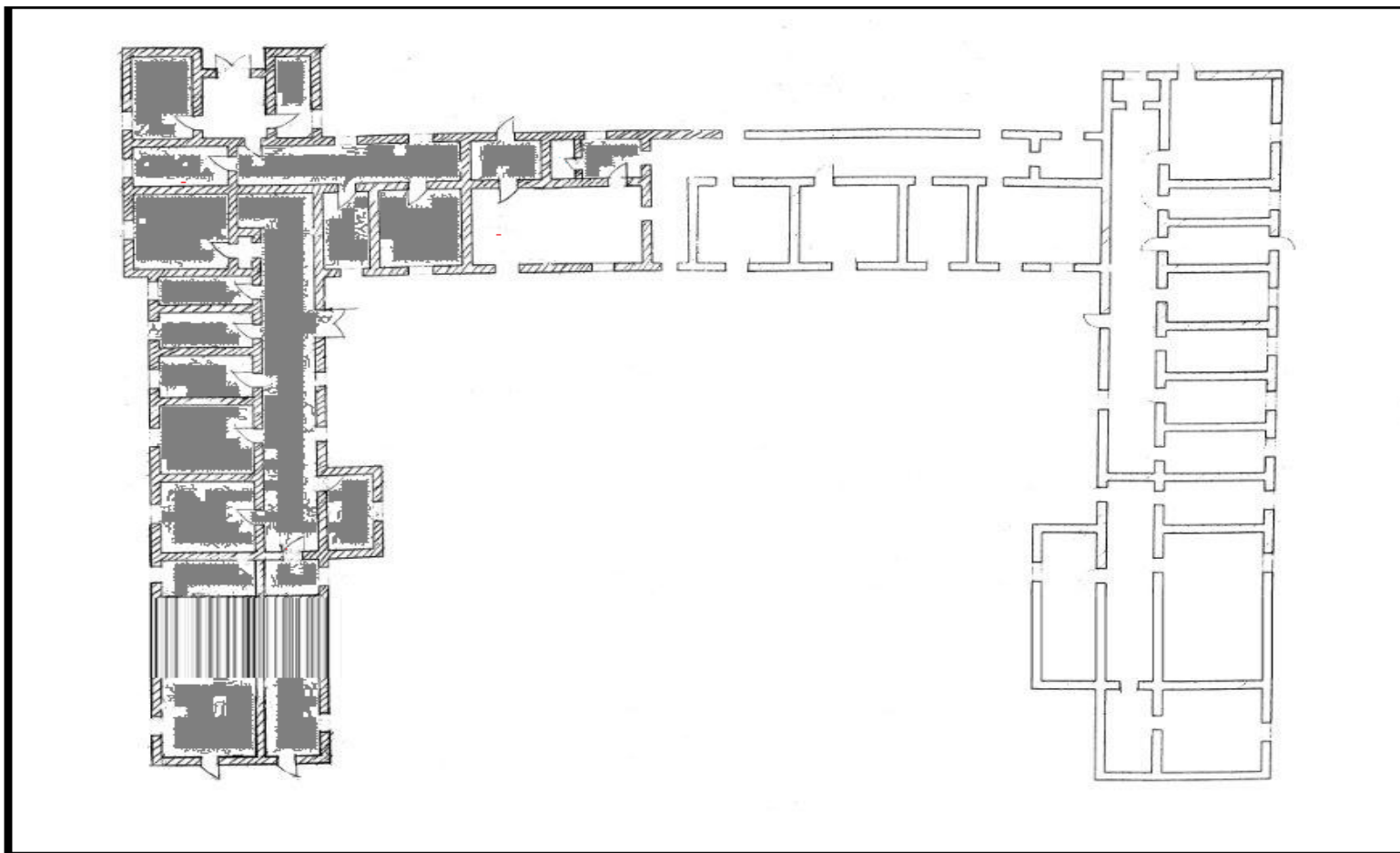




Empowered lives.  
Resilient nations.



# Tavildara District Hospital scheme





Empowered lives.  
Resilient nations.

## Assessment methodology used by UNICEF

| Damage rate   | Description of damage   | % of damage | Reconstructive activities  |
|---------------|---|-------------|--|
| D1 - Low      | Low damages to materials and unconstructive elements of the building: line cracks in plaster; spalling of small plaster fragments; line cracks of connections between walls and structure, door cases etc. Cracks up to 0,5mm. Visible damages of constructive elements are absent. | 5-15        | Maintenance work is needed: repair by plastering and topping of spalling.  |
| D2- Medium    | Considerable damages to materials and unconstructive elements of the building; drop of plaster layers; through-thickness crack in partition walls etc.  | 15-40       | Major repair of building is needed: repair with partial disassembly and renovating of spalling, grouting of cracks, reinforcement of construction elements |
| D3 – High     | Destruction of unconstructive elements, collapse of a partition walls.<br>Damages significantly reducing carrying capacity of construction: through-thickness crack in carrying walls, visible displacement of a panel.   | 40-80       | Renewal of the building is possible. Construction of additional supports /stands, reinforcement or replace of certain elements                             |
| D4 - Complete | Partial destruction of carrying walls: break (gap) of carrying walls, breakdowns of joints and attachment points, collapse of slabs. Collapse of large building parts   | Over 80     | Condemned building (restoration is unreasonable)   |
| D5 - Collapse | Full collapse of a building   | 100         |  |



Empowered lives.  
Resilient nations.

## Schools damage rate

| District  | School # | Number of students | Number of classrooms | D 1 | D 2 | D 3 | D 4 | D 5 |
|-----------|----------|--------------------|----------------------|-----|-----|-----|-----|-----|
| Nurobod   | 5        | 435                | 11                   |     |     |     |     |     |
|           | 23       | 390                | 11                   |     |     |     |     |     |
|           | 25       | 326                | 12                   |     |     |     |     |     |
|           | 65       | 41                 | 2                    |     |     |     |     |     |
|           | 31       | 222                | 10                   |     |     |     |     |     |
|           | 58       | 22                 | 2                    |     |     |     |     |     |
| Rasht     | 56       | 177                | 7                    |     |     |     |     |     |
| Tavildara | 25       | 84                 | 6                    |     |     |     |     |     |
|           | 39       | 2                  | 31                   |     |     |     |     |     |
|           | 12       | 123                | 10                   |     |     |     |     |     |
|           | 19       | 71                 | 10                   |     |     |     |     |     |
|           | 7        | 186                | 9                    |     |     |     |     |     |



Empowered lives.  
Resilient nations.



---

# Thank you.

---

**REACT Meeting, April 30, 2012**