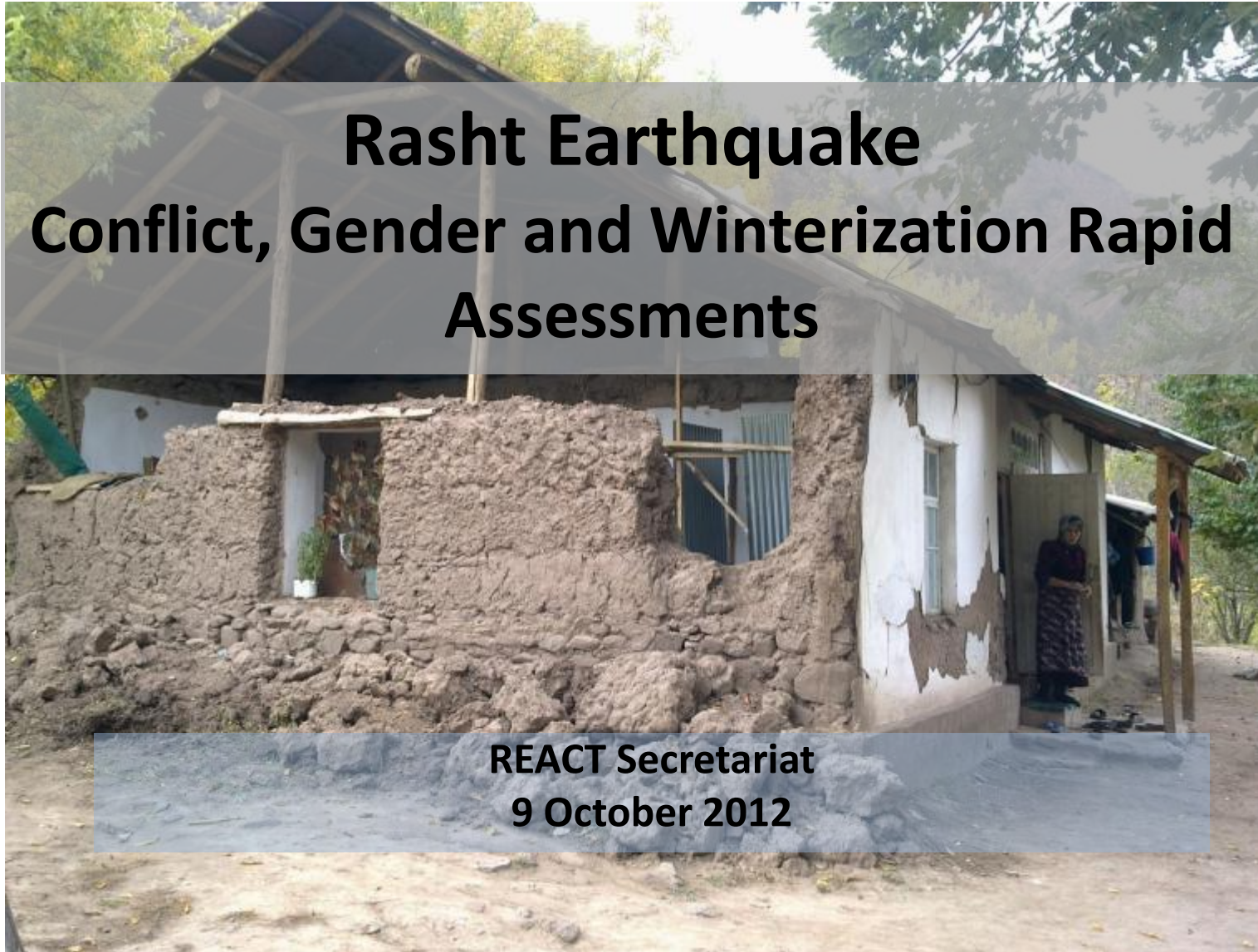


Rasht Earthquake Conflict, Gender and Winterization Rapid Assessments

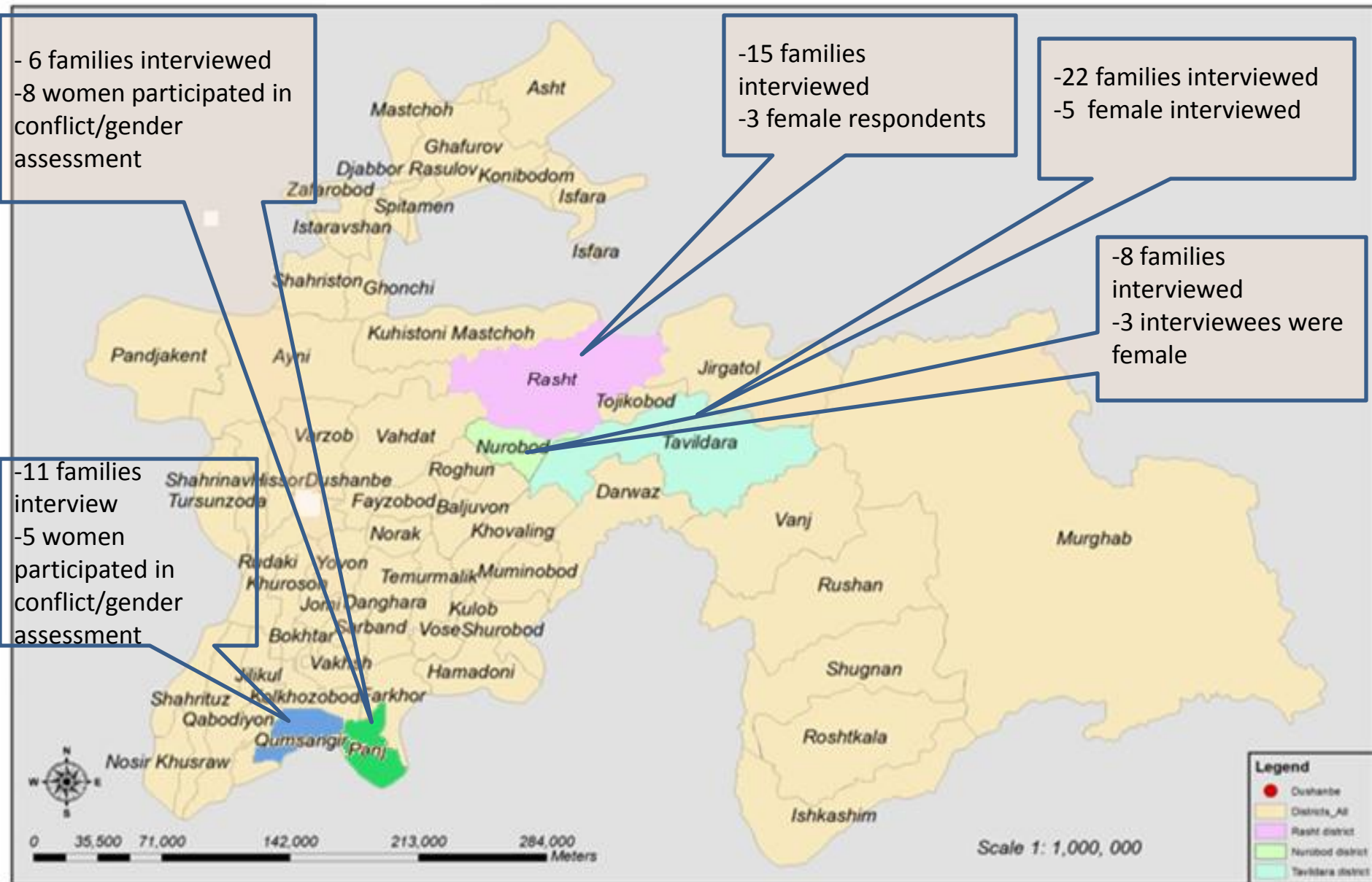
REACT Secretariat
9 October 2012



Assessment Process

- Objectives:
 - Winterization: to identify priority needs for families during the coming winter
 - Gender: to identify gender related issues which can affect recovery
 - Conflict: to identify conflict related issues which can affect recovery
- A “good enough” approach: collecting information of immediate usefulness
- Focus group (male/female) for conflict and gender, individual interview for winterization
- Conflict and gender assessments: Kumsangir and Panj relocation sites
- Winterization: Kumsangir, Panj, affected villages in Rasht, Nurobod and Tavildara
- Support from SCF/K. Tube and German Agro Action in Rasht Valley





Conflict & Gender

Issues Requiring Priority Attention

Conflict	Gender
<ul style="list-style-type: none"> • Both sites have the potential for conflict over water • Both sites have the potential for conflict over access to land • Both sites indicated issues with access to education facilities which may pose the potential for conflict 	<ul style="list-style-type: none"> • Disagreement between men and women at both sites as to whether deeds for houses will be in the names of both male and woman heads of households • Water supplies and sanitation facilities do not meet the needs of the women interviewed (fall below SPHERE Standards). • Cooking fuel a problem at both sites and places burden on women and children • Food security an issue due to lack of income, distance to market, lack of food stocks, and lack of employment, with burden on women • Concern for child safety in Panj due to ground water storage pits.

Winterization Challenges - Rasht



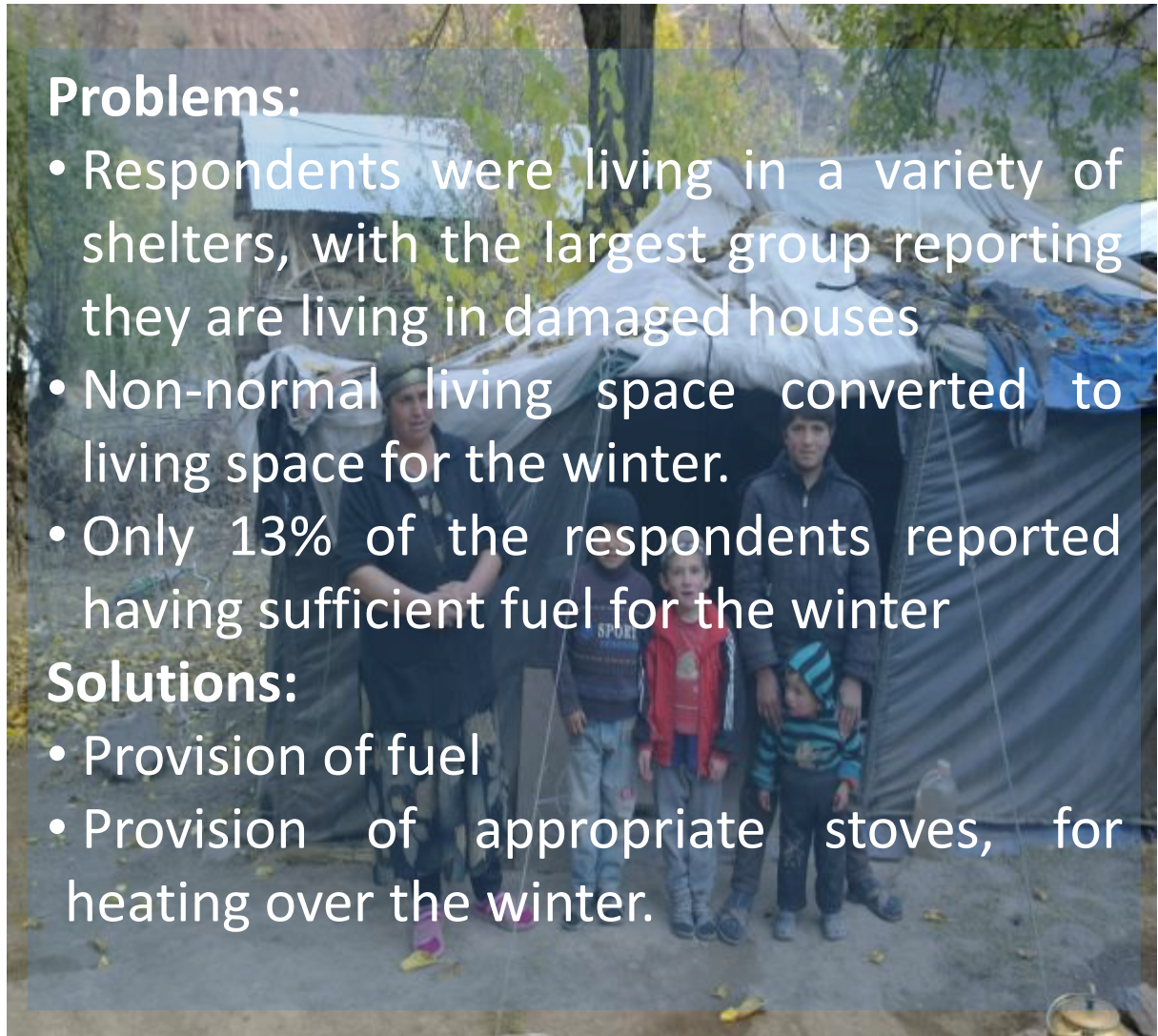
Assessment covered 35% of 179 affected families, included 13% female respondents.

Problems:

- Respondents were living in a variety of shelters, with the largest group reporting they are living in damaged houses
- Non-normal living space converted to living space for the winter.
- Only 13% of the respondents reported having sufficient fuel for the winter

Solutions:

- Provision of fuel
- Provision of appropriate stoves, for heating over the winter.

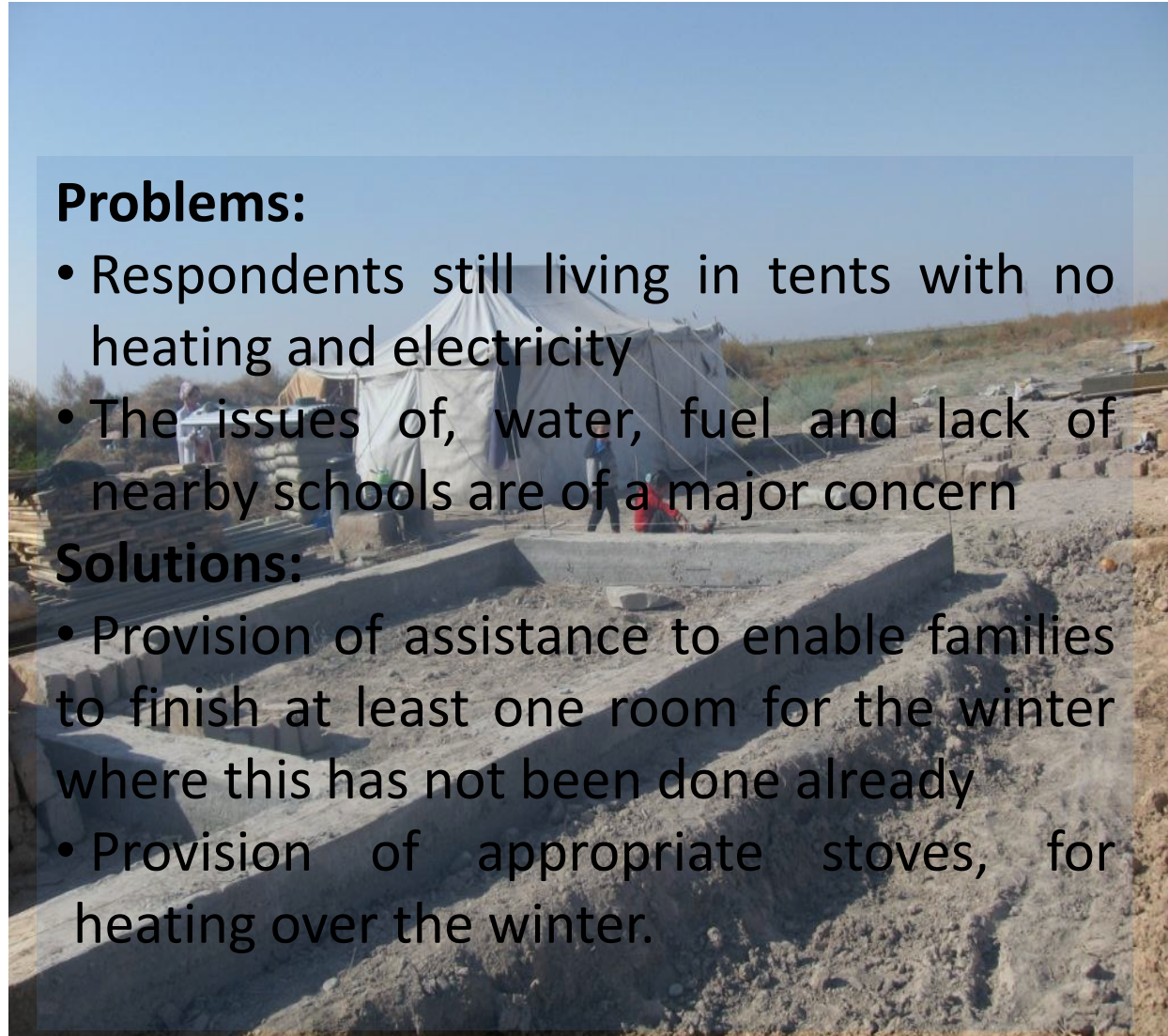


Winterization Challenges – Relocation site



Assessment covered 36 % of
45 affected families,
included 50% female
respondents.

10/8/2012



Problems:

- Respondents still living in tents with no heating and electricity
- The issues of, water, fuel and lack of nearby schools are of a major concern

Solutions:

- Provision of assistance to enable families to finish at least one room for the winter where this has not been done already
- Provision of appropriate stoves, for heating over the winter.

Next Steps

- Winterization
 - Shelter Cluster (Fuel and stoves)
- Gender
 - UN Women (deeds for houses)
 - WASH Cluster (water and sanitation)
 - Food Security Cluster (fuel and access to food)
- Conflict
 - WASH Cluster (water and sanitation)
 - Education Cluster (access to education facilities)
 - Hukumat (access to land)

Rasht Earthquake Conflict, Gender and Winterization Rapid Assessments

REACT Secretariat
9 October 2012

