

Community Action



Global Impact



UNDP-GEF



Small Grants Programme

Tajikistan

SGP The GEF
Small Grants
Programme



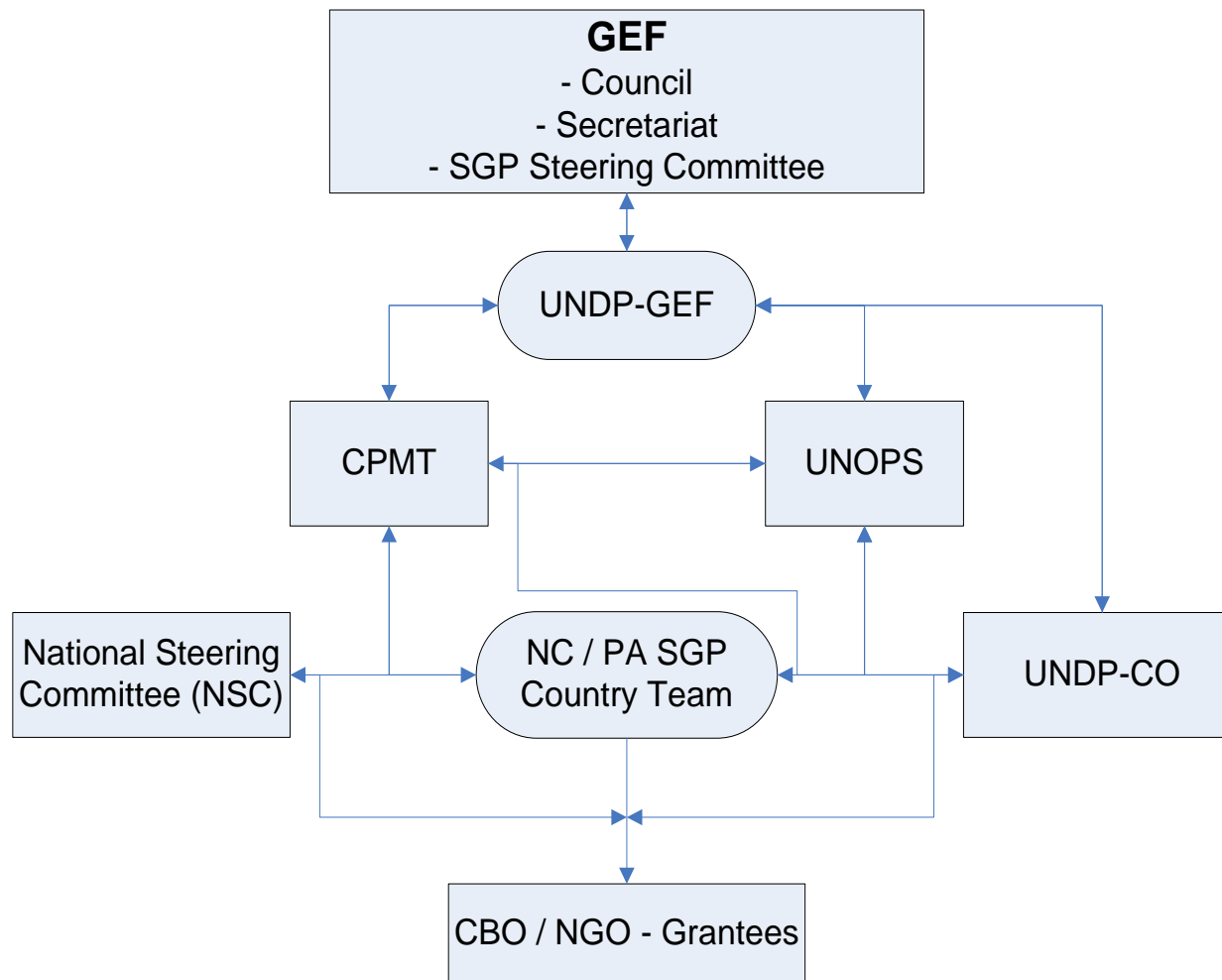
- The GEF's mission is **Support to Community Initiatives in the Area of Environment** protection;
- Global Environment Facility (GEF) It is a financial mechanism structured as a trust fund that operates in collaboration and partnership with the three implementing Agencies: UNDP, UNEP and The World Bank;
- SGP is funded by the GEF (since 1992) as a corporate programme, is implemented by UNDP and executed by UNOPS;
- SGP operates in 122 countries, supported >12,500 projects globally, for over US\$407 million from GEF and same amount from other partners in cash or in kind equivalents;
- GEF SGP Tajikistan was launched in September 2009;
- SGP Tajikistan supported 16 projects, for a total amount of \$180K using the GEF and UNDP funds;
- GEF-5 Budget for 2011-2014 yrs is equal to: \$1,400,000.

The **Global Environment Facility** (GEF) focal areas:

- **Conservation of biodiversity,**
- **Mitigation of climate change,**
- **Combat land degradation and desertification,**
- **Protect International Waters, and**
- **Persistent Organic Pollutants (POPs)/ Chemicals.**

Geographic focus: Soughd, Rasht and Khatlon Regions, districts under Republican Subordination, and Darvaz region. Except GBAO.

Main SGP Structure



How to Apply for a Grant

CBOs and National/local **NGOs** may **propose projects for grant support** under the SGP.

1. The project proponent **contacts** the SGP National Coordinator (**NC**) to receive **project application guidelines** and forms.
2. With assistance from the NC and using the **standard SGP format**, the proponent prepares a brief project **concept paper** and submits this to the NC.
3. The NC reviews and **pre-screens the concept paper according to GEF criteria** and criteria **adopted by the National Steering Committee (NSC)** for activities;
4. If the project is judged eligible, the project proponent **prepares a project proposal**; in some cases, this step may be supported by a **planning grant (?)**.
5. Completed project **proposals are submitted** by the NC to the NSC.
6. The **NSC reviews the proposal** and either **accepts it, rejects it, or returns it to the proposer** with a request that **further work** be done on formulating and refining the project data.
7. **Approved proposals enter the national GEF/SGP work programme**. GEF/SGP grants are usually paid in **three installments**: an **up-front** payment to **initiate the project**; a **mid-term** payment upon **receipt of a satisfactory progress** report; and a **final payment** on receipt of a satisfactory project completion and final report.

Grants

- Grants are made **directly** to community-based organizations (**CBOs**) and non-governmental organizations (**NGOs**) in recognition of the **key role they play as a resource and constituency for environment and development concerns**.
- The **maximum grant** amount per project is **US\$50,000**, but averages around **US\$20,000**. Grants are channeled directly to CBOs and NGOs.
- The **SGP** projects **must match** dollar for dollar the GEF funds, ensure 1:1 co-funding ratio, evenly divided between cash and in-kind (work, use of own machinery, materials etc.).

EXPECTED RESULTS



- **Direct benefits** to the communities involved.
- **Awareness and understanding** of global environmental problems.
- **Strengthening of local initiatives** and community participation.
- **Capacity building and ownership** of community groups.
- Identification of **adequate solutions** in the local and national contexts.
- **Global, local and national** environmental benefits.
- **Documentation and dissemination** of the experiences and lessons learned from the projects (knowledge management).
- **Replication** of the experiences and **Up-scaling**.
- **Incorporation/mainstreaming** of the **good practices in national policies** and in the execution of other programmes and projects.
- **Impact at both local and global** levels.

SGP Projects



We welcome any kind of cooperation and eagerly expecting you to become our partner!



Thank you!

Land Degradation (Desertification and Deforestation) Strategy

Sustainable Forest Management (SFM)/REDD-plus* Strategy

GEF-5 Focal Area Strategies

www.theGEF.org

Land Degradation and SFM

- The Land Degradation Focal Area (LD FA) and Sustainable Forest Management (SFM) directly support the implementation of the UNCCD, as well as fosters synergetic benefits with the UNFCCC, UNCBD and international agreements on the sustainable use of Waters.
- Integrated watershed in priority transboundary catchments and groundwater recharge areas (links with IW Focal Area);
- Increasing forest and tree cover in production landscapes (links with CCM Focal Area), and;
- Implementation of landscape approaches for protected area management (links with Biodiversity Focal Area).

LD and SFM: Objectives

Key Objective: Contribute to arresting and reversing current global trends in land degradation, specifically desertification and deforestation.

Land Degradation:

- 1) Maintain or improve flows of **agro-ecosystem services** to sustain the livelihoods of local communities;
- 2) Generate sustainable flows of forest ecosystem services in arid zones, including **sustaining livelihoods of forest-dependant** people;
- 3) Reduce **pressure** on natural resources from **competing land uses** in the wider landscapes;
- 4) **Increase capacity** to apply adaptive management tools in SLM.

Sustainable Forest Management

- 1) Activities that reduce **pressures** and **generate ecosystem** services;
- 2) Strengthening **enabling environment** (reduce GHG, transformative activities supporting multi-sectoral investments);

GEF 5 Strategic Approaches for Land Degradation

- Exploit **Adaptive Collaborative Management** principles for Sustainable Land Management
- Reduction of **negative impacts** on Agro and Forest Ecosystems
- Support to **Ecosystems Functions**
- Implementation of **Landscapes Approaches**
- **Integrated** and **Joint** Management of Land Resources
- Enhancing **carbon sinks** from LULUCF activities

GEF 5 Strategic Approaches for Sustainable Forest Management

- Increasing **Forest** and **Non Timber Forest** Resources
- Climate Change **Mitigation** (Includes carbon stocks enhancements, Climate Proofing Activities)
- **Links** with other GEF Focal Areas for **Synergies** and Multiple Benefits from Investments in Forest.
- Up Scaling and Replication of Forest Management Practices