

**Information Management and Analytical Center of
Committee of Emergency Situations and Civil
Defense**

**Tentative forecast for spring flooding and
mudflow of the main river basins in Tajikistan
for 2012**

March 27, 2012

River Basin Panj

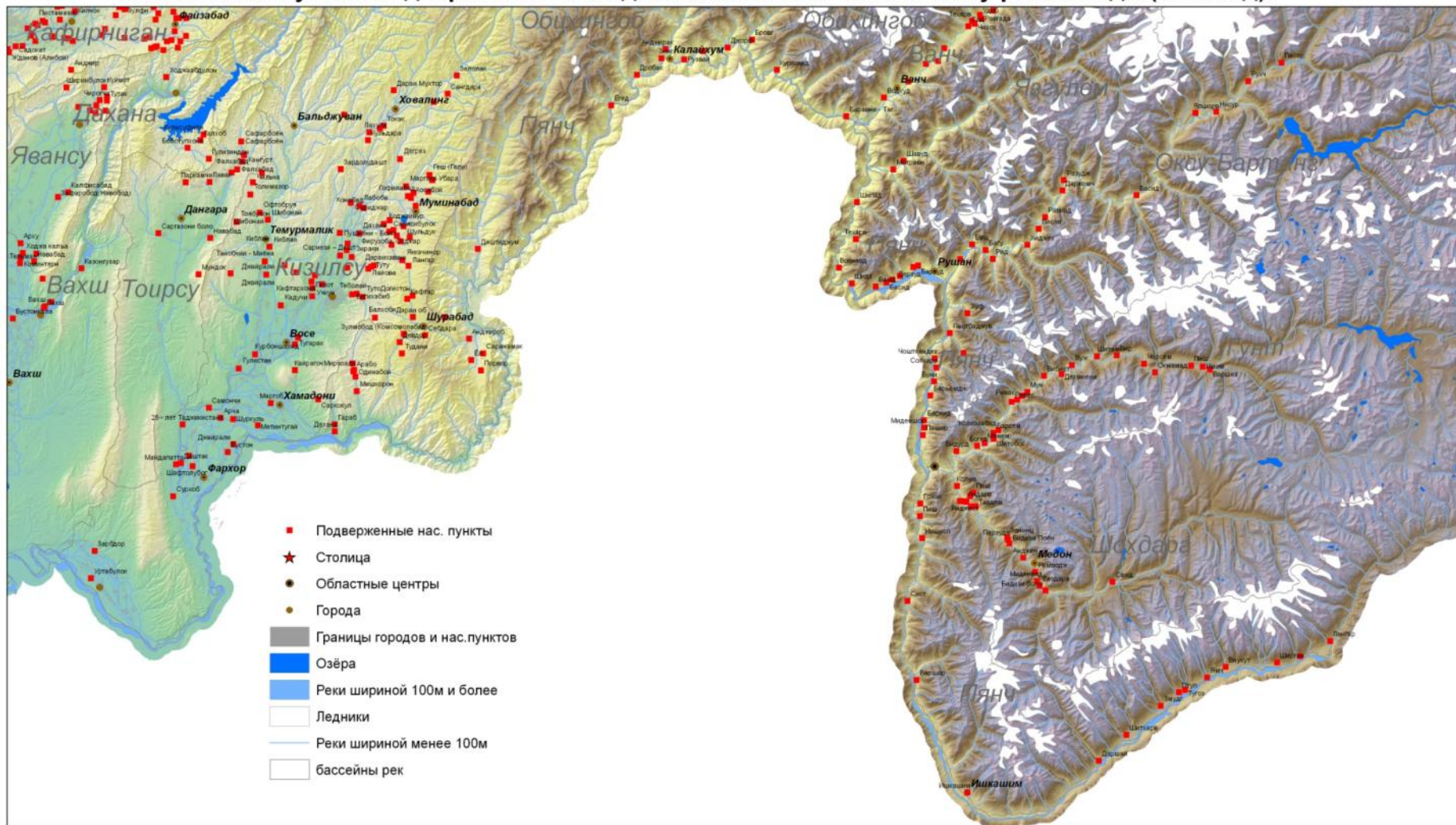
Peak period:

- At higher elevations from 27 April – 17 June;
- In middle from 1st April to maximum 25 June;
- At lower elevations from March 2nd to maximum 14 July.

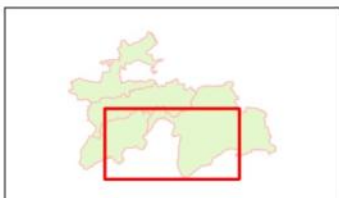
Expected flow of water- 99 – 127% average:

- Risk of flooding – ***medium*** from June to July.
- High risk of flooding at medium and lower elevations of the river.
- In the event of intense precipitation and / or prolonged abnormal increase in air temperature may increase the risk to the ***high***.
- There is a possibility of the mudflows during heavy rainfall.
- **194 communities, 2014 households and 14873 people are prone to mudflow and floods from the basin.**

Населенные пункты подверженные наводнениям и селям по бассейну реки Пяндж (2012 год).



Карта подготовлена в ИАЦ КЧС и ГО при ПРТ



1:640 063



River Basin Gund

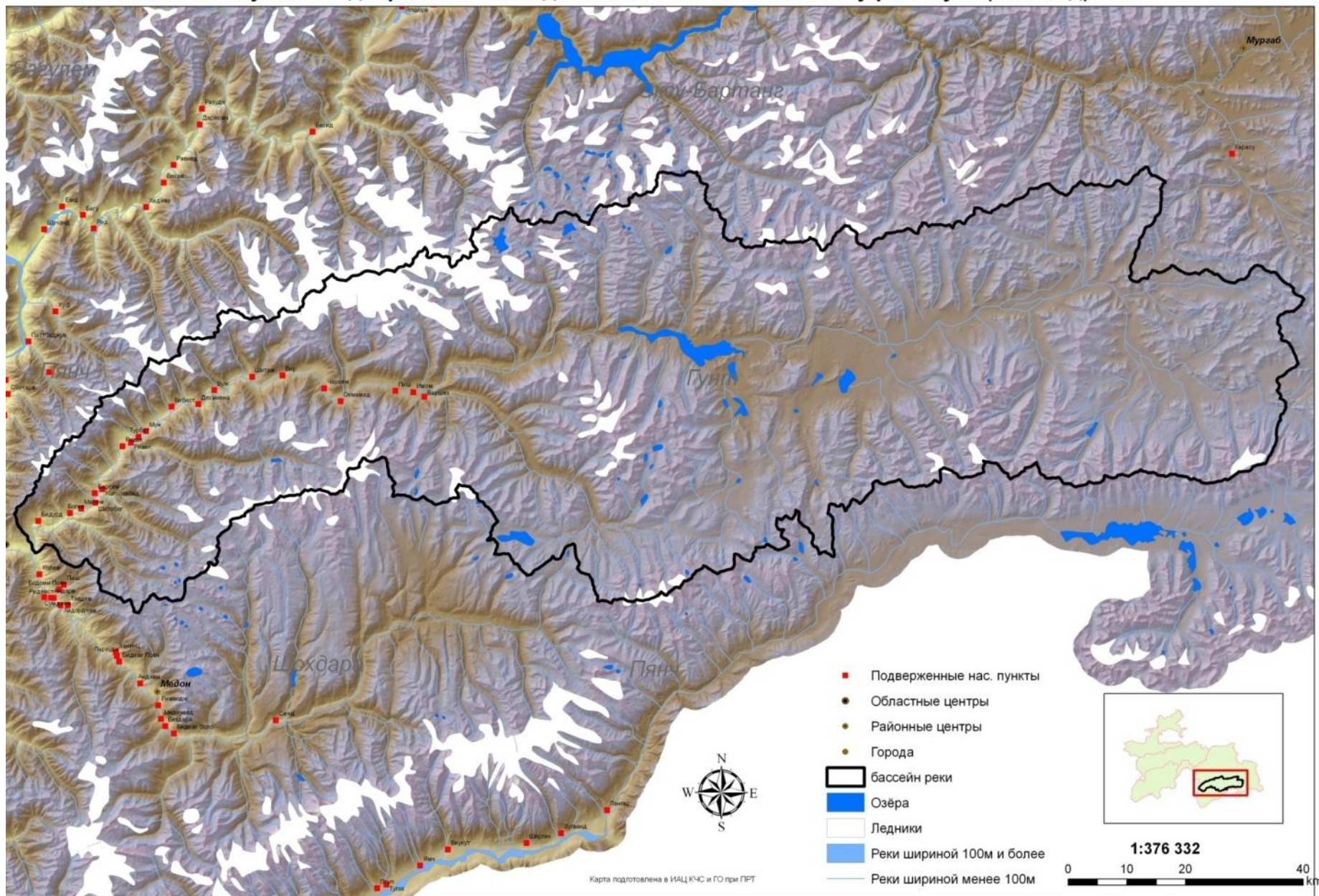
Peak period:

- From 16 April to maximum 9 July
- End of risk of flood - October

Expected flow of water– 105 - 128% average

- Risk of flooding – medium from June to July
- Prolonged abnormal increase in air temperature may increase the risk to the *high*
- In the event of intense precipitation there is a risk of mudflow
- Information on community, households and people prone to floods and mudflow is included to the information provided on river basin Panj.

Населенные пункты подверженные наводнениям и селям по бассейну реки Гунт (2012 год)



River Basin Vakhsh

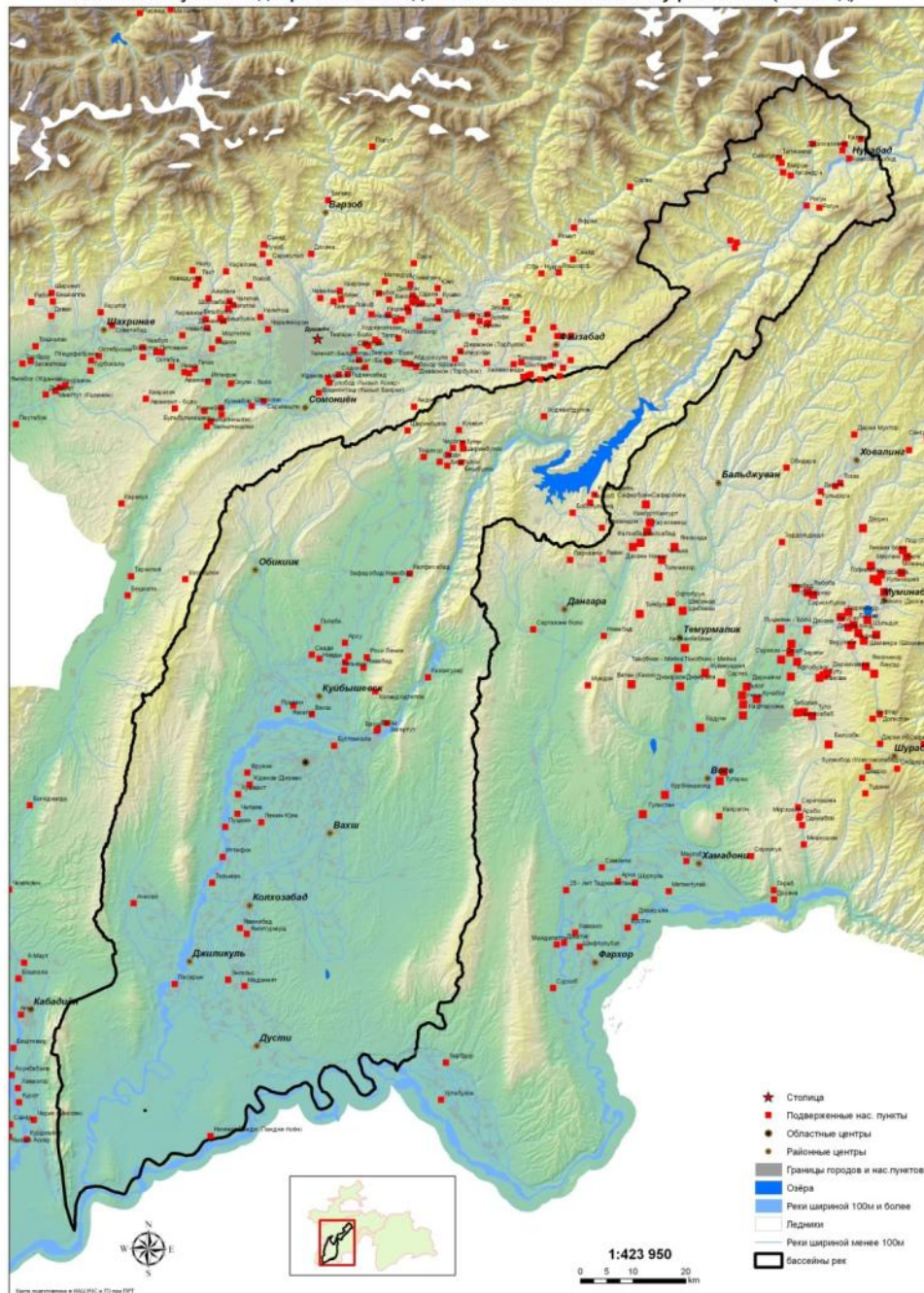
Peak period:

- At higher elevations from April 2nd to maximum 13 July
- In Middle from March 25 to Maximum 16 July
- At lower elevations from March 9th to maximum 29 April

Expected flow of water at Nurek reservoir tributary within 110-130% average

- Risk of flooding – ***medium*** – end of April to July
- In the event of intense precipitation – the risk is ***high***
- In the event of intense precipitation there is a risk of mudflow
- **170 communities, 3512 households and 23019 people are prone to floods and mudflow from River Basin Vanj.**

Населенные пункты подверженные наводнениям и селям по бассейну реки Вахш (2012 год)



River Bsin Kafernigan

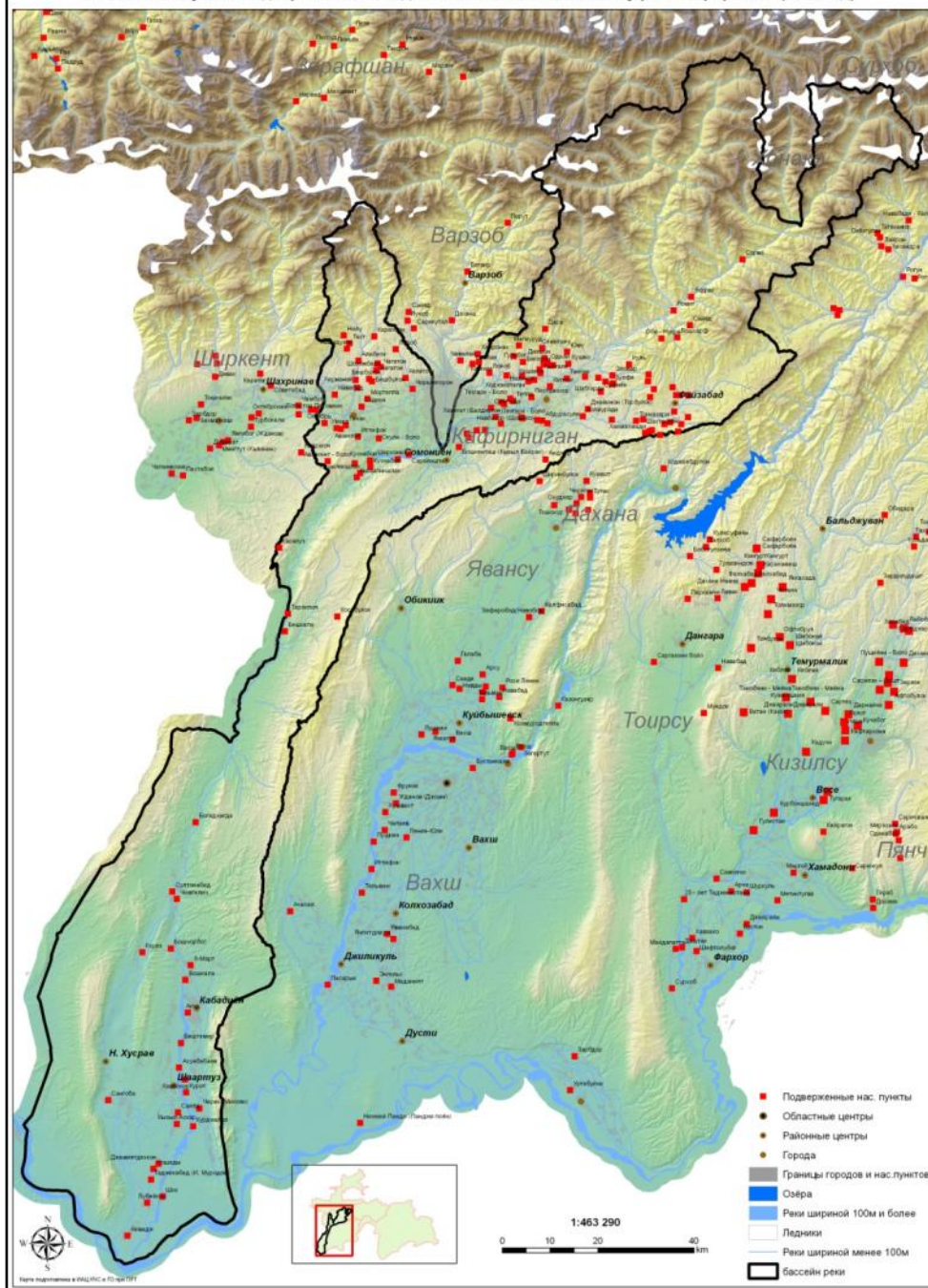
Peak Period:

- At lower elevations – from February 19 to maximum 6 May
- in Middle – from March 3rd to maximum 20th May
- At higher elevations – fro April 2nd to maximum July 10th

Expected flow of water - 108 - 140% average

- Risk of flooding - **high** from May to June
- In the event of intense precipitation the risk is **very high**
- Most probably flooding risk in middle and lower elevatons of the river
- In the event of intense precipitation there is a risk of mudflow
- **163 communities, 1621 households and 10634 people are prone to floods and mudflow from River Basin Kafernigan.**

Населенные пункты подверженные наводнениям и селям по бассейну реки Кафирниган (2012 год).



River basin Varzob

Peak period:

- At lower elevations – from March 6th to maximum May 20th and to September

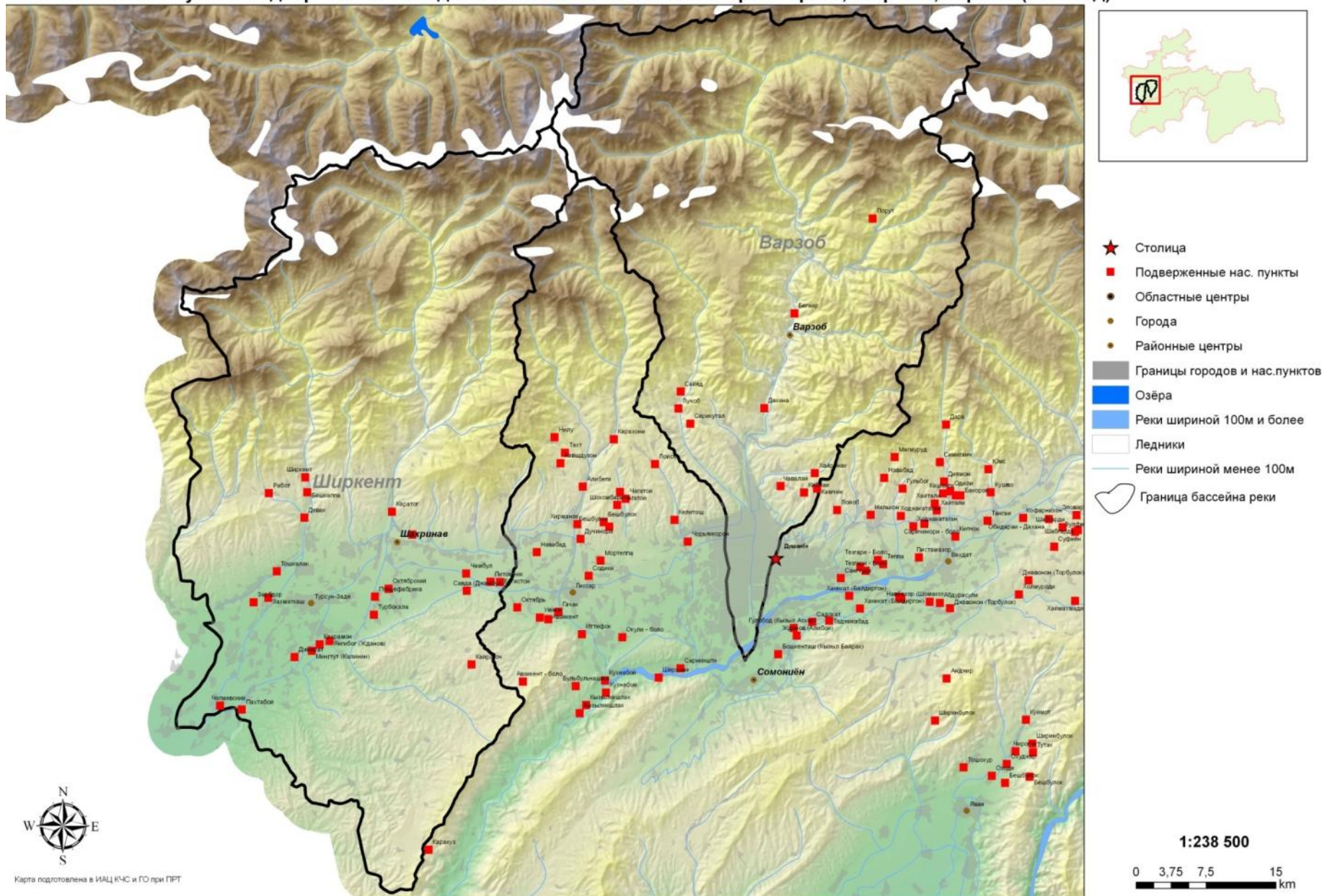
Expected flow of water 106 – 132% average

- Risk of avalanches – **high** from April to June
- In the event of intense precipitation the risk is **very high**
- Most probable flooding risk in middle and lower elevations of the river
- **16 communities, 205 households and 1469 people are prone to floods and mudflow from River Basin Varzob.**

River basins Shirkent and Karatag

- No forecast for water flow, probable information of expected water flow and the risk of flooding are the same as River Basin Varzob
- **31 communities, 283 households and 1795 people are prone to floods and mudflow from River Basin Varzob**

Населенные пункты подверженные наводнениям и селям по бассейнам рек Варзоб, Ширкент, Каратаг (2012 год)



River Basin Zaravshan

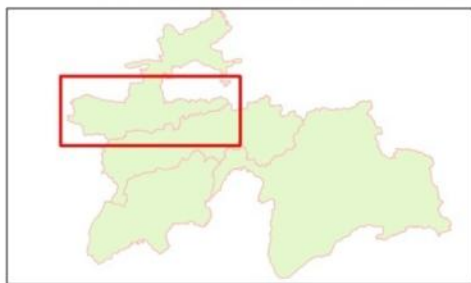
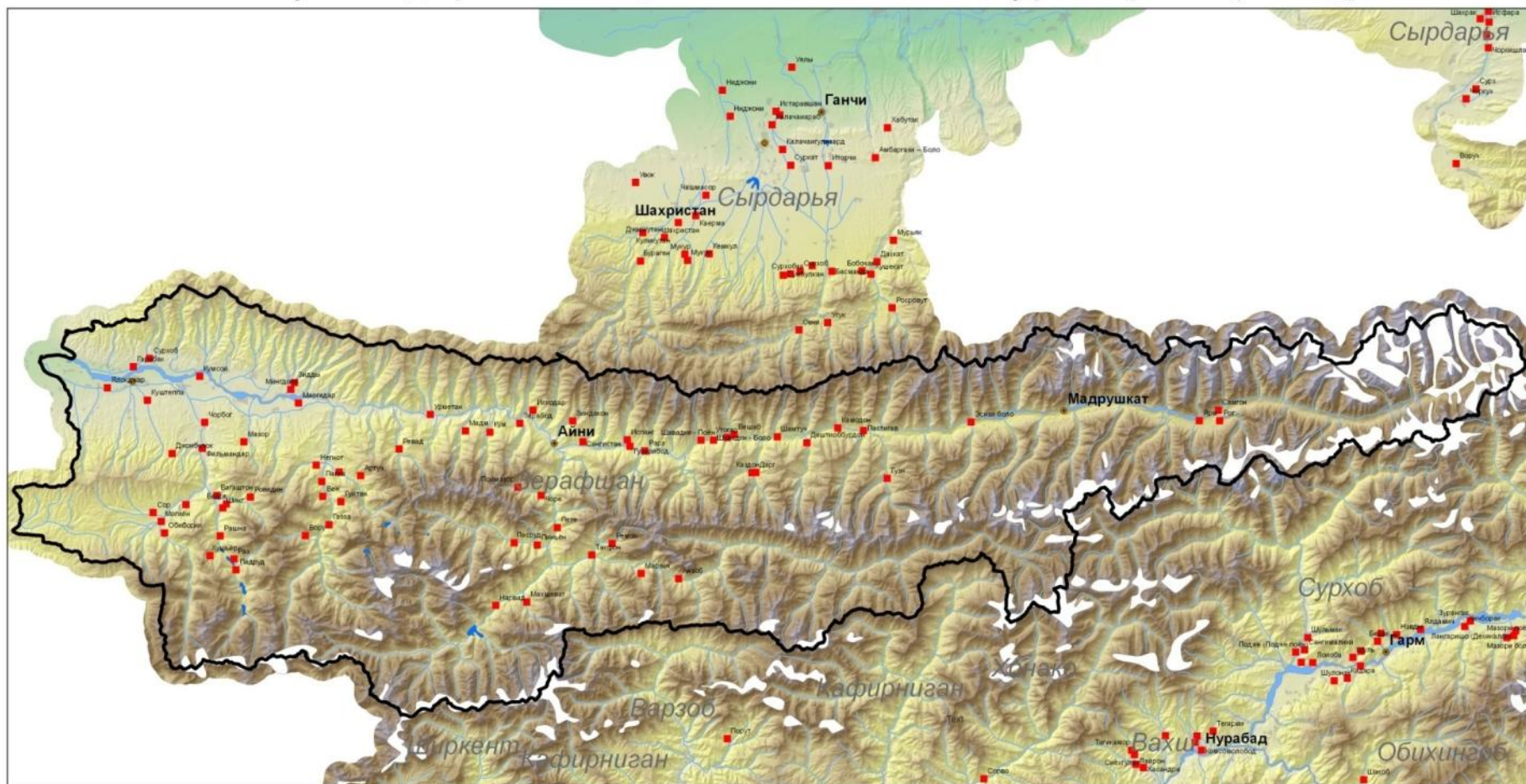
Peak Period:

- At lower elevations from April 14th to maximum 12 July
No forecast of water flow for Zarafshan river basin.

The accumulation of total precipitation in the basin during the winter period of almost one and a half - two times higher than average (123 - 181%).

- Risk of avalanches - **high** from June to July
- In the event of intense precipitation and snow melting the risk is **very high**
- There is a possibility of mudflow in event of intense precipitation
- **23 communities, 2041 households and 14873 people are prone to floods and mudflow from River Basin Zarafshan**

Населенные пункты подверженные наводнениям и селям по бассейну реки Зеравшан (2012 год).



1:494 157



- Подверженные нас. пункты
- Областные центры
- Районные центры
- Города
- Границы городов и нас. пунктов
- Озёра
- Ледники
- Реки шириной 100м и более
- Реки шириной менее 100м
- бассейн реки

River Basins Sirdarya and Isfarinka

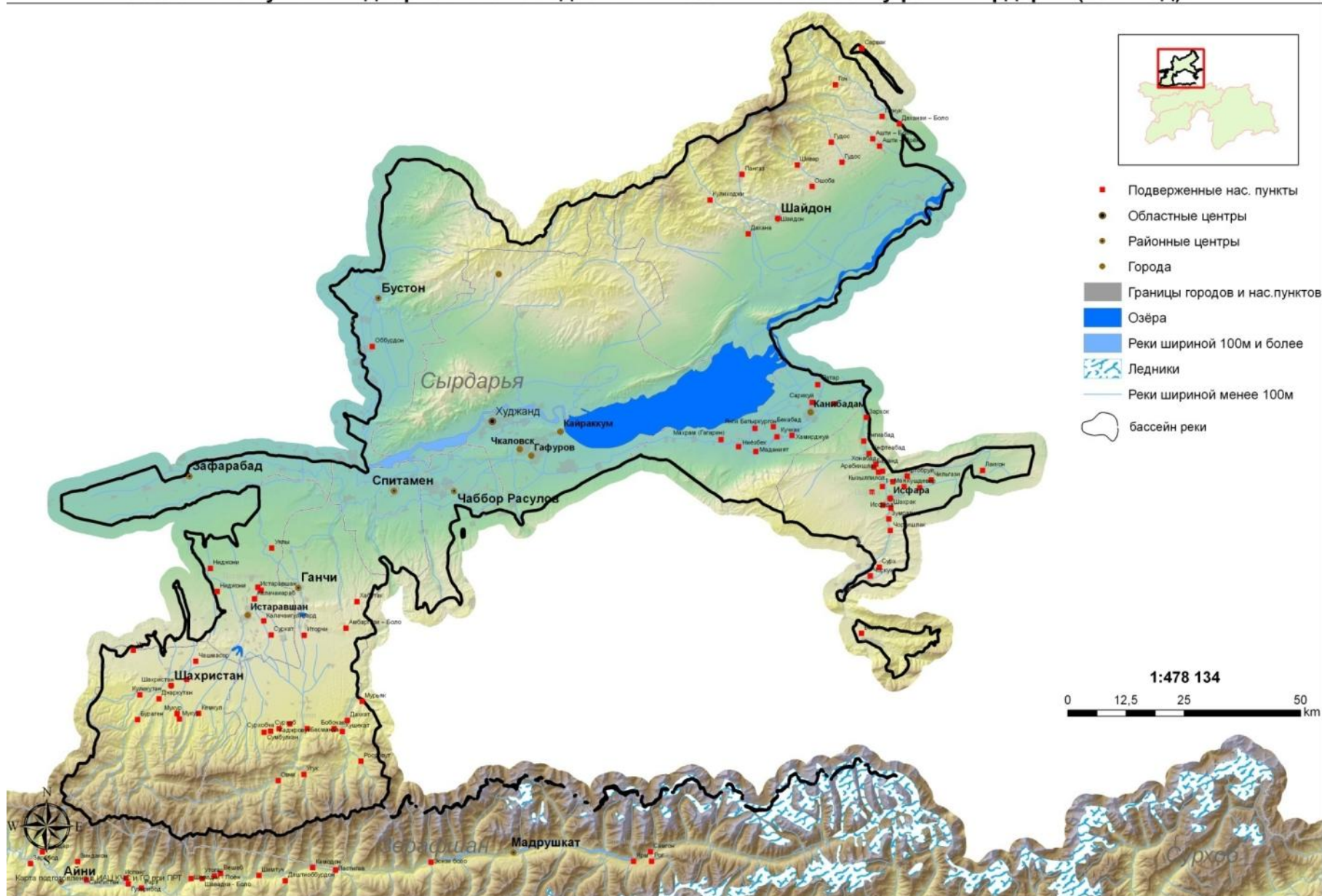
Peak Period:

- From April 26 to October 18 with maximum to July 29

Expected flow of water - 102 – 128% average

- Risk of flooding – *medium* from June to August
- In the event of precipitation and intensive snow melting, the risk is *high* - May
- There is a possibility of mudflow in event of intense precipitation
- **69 communities, 1602 households and 8934 people are prone to floods and mudflow.**

Населенные пункты подверженные наводнениям и селям по бассейну реки Сырдарья (2012 год).



Rive Basins Yakhsu and Kizilsu

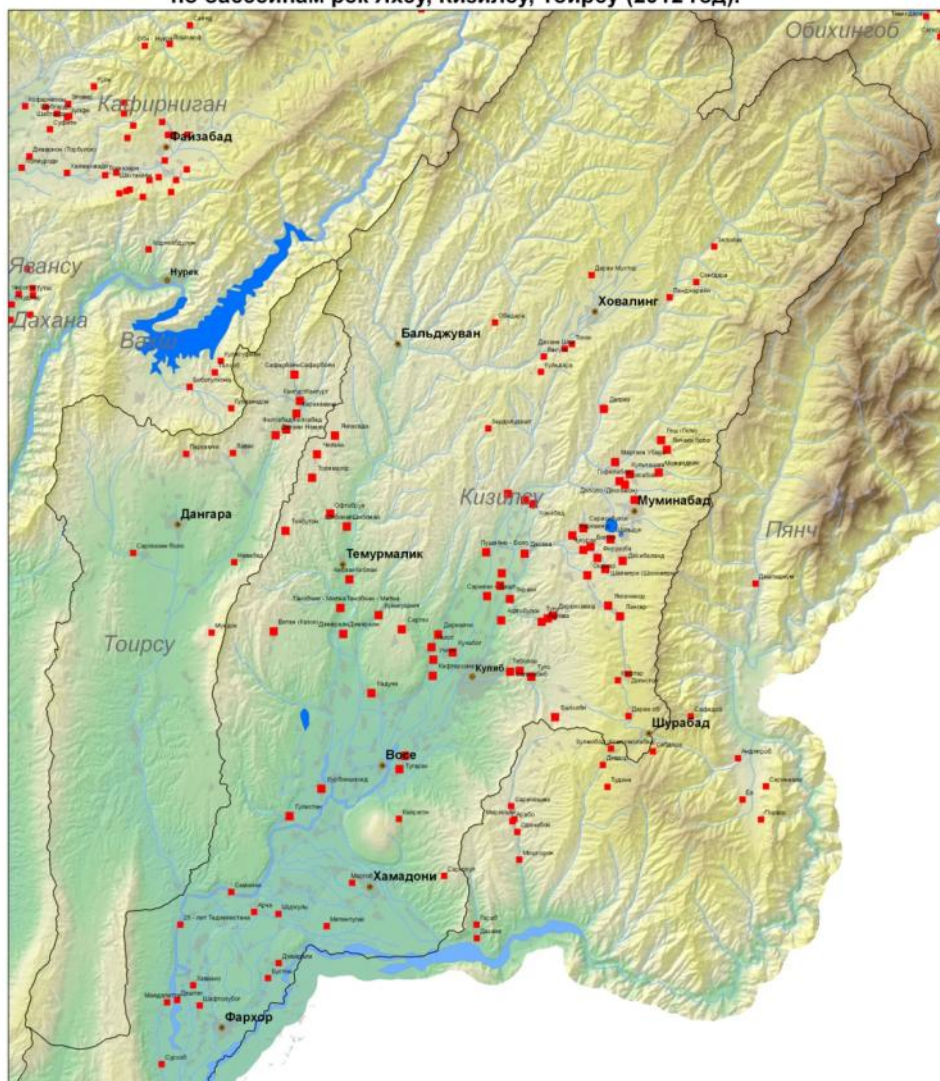
Peak period:

- From February 18th to July 7th and maximum to 1st May

Expected flow of water - 124 – 155% average

- Risk of flooding – ***high*** from April to May and ***medium*** from March to June
- In the event of intense precipitation the risk is ***very high***
- There is a possibility of mudflow in event of intense precipitation
- **128 communities, 2266 households and 19568 people are prone to floods and mudflow.**

**Населенные пункты подверженные наводнениям и селям
по бассейнам рек Яхсу, Кизилсу, Тоирсу (2012 год).**



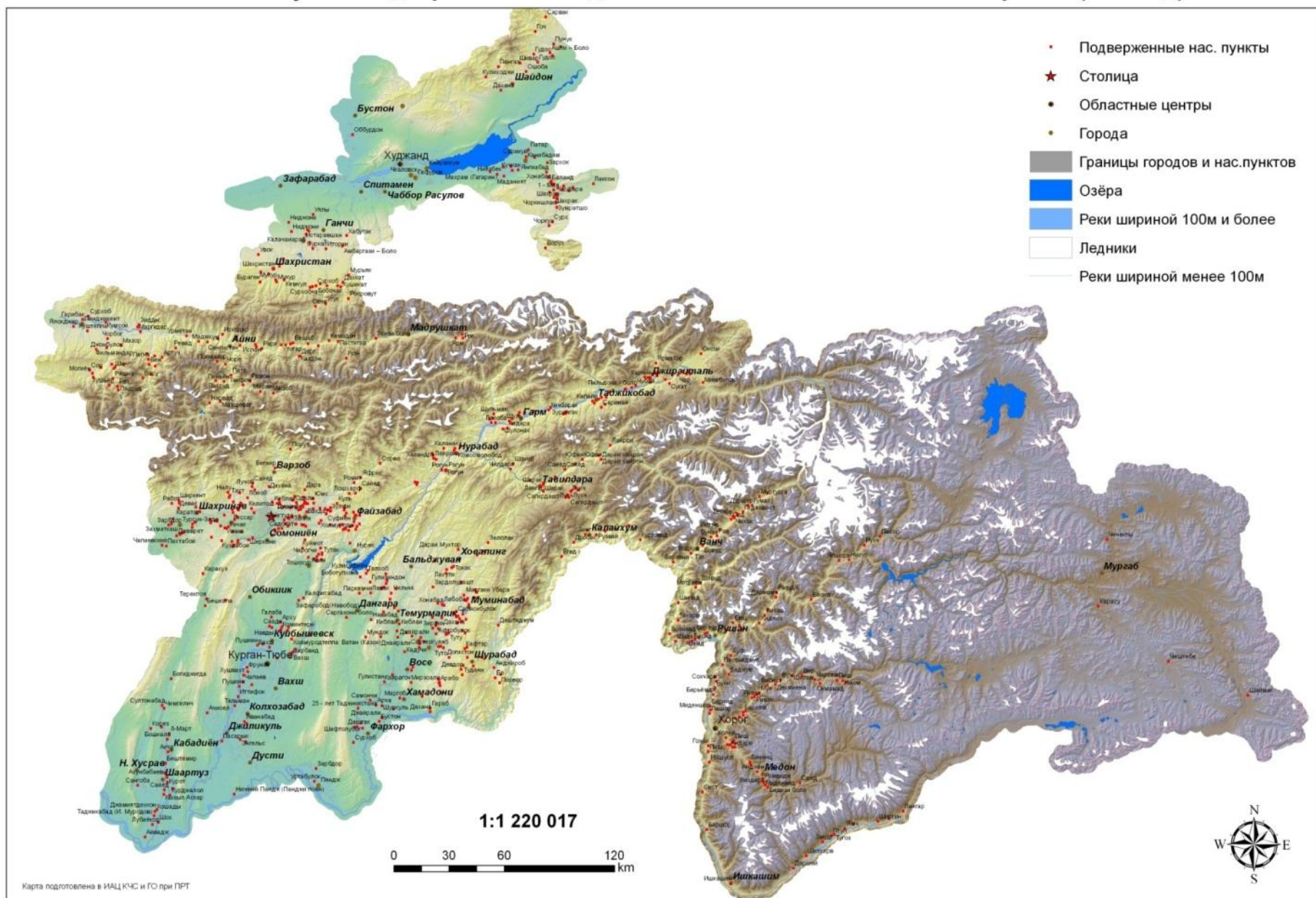
Карта подготовлена в ИИД ГИС и ГИД при ГИД



1:304 399
0 3.5 7 14
km

- Подверженные нас. пункты
- Областные центры
- Районные центры
- Города
- Границы городов и населенных пунктов
- Страна
- Ледники
- Реки шириной 100м и более
- Реки шириной менее 100м
- бассейн реки

Населенные пункты подверженные наводнениям и селям по всем бассейнам рек РТ (2012 год).



Conclusion

- In total, river flow is forecasted to be ***higher*** than long term average;
- Risk of flooding in river basins Panj, Gund, Vakhsh and Isfarinka – ***medium***;
- Risk of flooding in river basins Kafernigan, Varzob, Karatag, Yakhsu and Kizilsu - ***high***;
- Risk of flooding in river basin Zarafshan is – ***high***;
- The risk of flooding can be higher in the event of intense precipitation, and for the rivers with icy flow – the risk is higher in the event of increase in air temperature;
- High risk of mudflows in the event of intense precipitation and there is a risk of breaks of glacier lakes in the event of increase in air temperature;
- In total 778 communities, 13366 households and 93696 persons are prone to floods and mudflows.

Flood forecast is taken by the forecast of river flow
from the period of March 6 2012 by the State
Hydrometoreological Center

Thank you for attention