

Earthquake in Vanj District, GBAO, Tajikistan**Situation report № 7**
18 March 2010**Situation Overview**

- The government has developed a master plan for the new settlement for 200 families affected by the earthquake. Plans and designs for houses and social infrastructure are being developed and partial construction has started.
- A vulnerability assessment conducted by REACT among 250 earthquake-affected families found that 71% of them are highly vulnerable and may lack the resources to reconstruct their houses.
- REACT members, involved in relief and recovery, held a “Recovery Planning” meeting on February 18th. The recovery plan shows that support for house construction is the biggest gap.

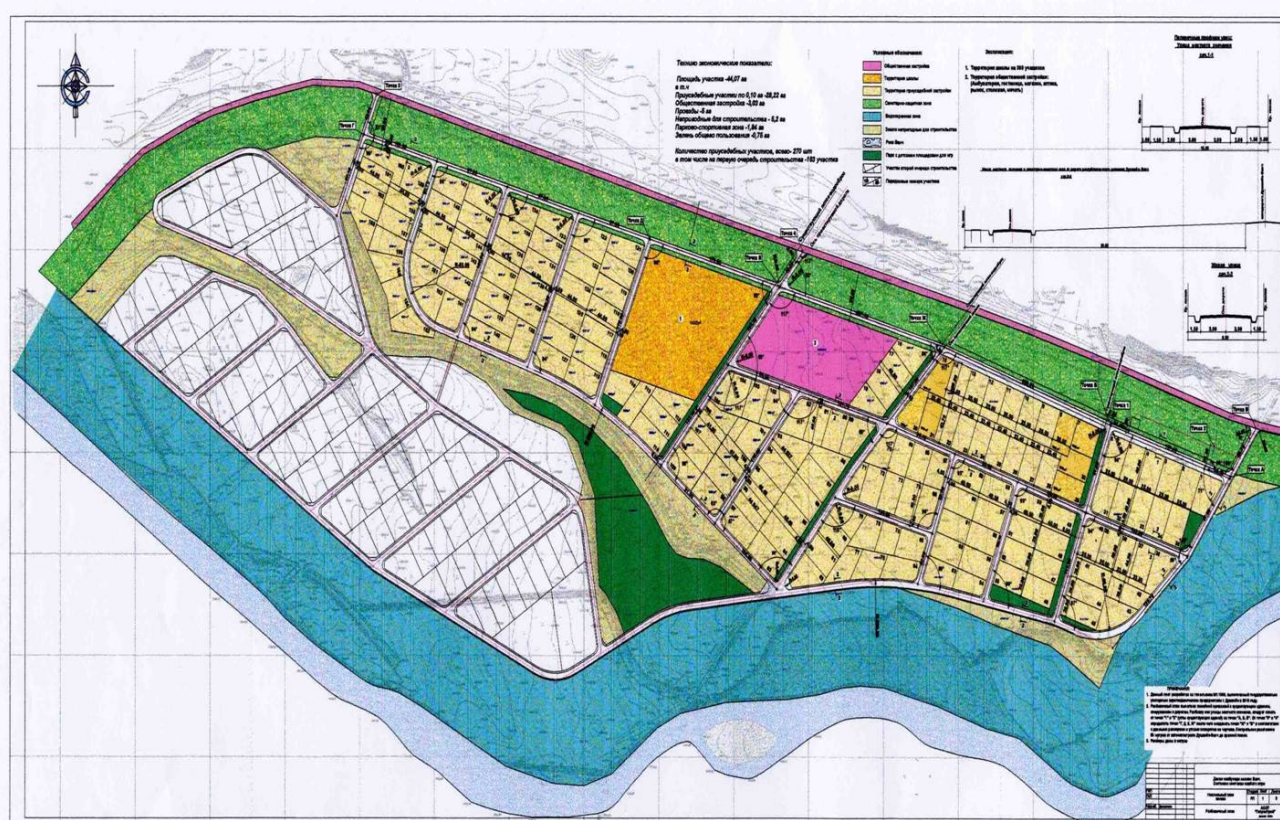
Damage and Needs Information

- CoES confirms that the occupants of the 135 most damaged houses need to be relocated to the new settlement, 17 km away from the Vanj district center. An additional 65 families living on unstable mountain slopes also need to be relocated.
- REACT conducted a rapid assessment of the socio-economic vulnerability and coping capacity of 250 households whose houses were damaged or destroyed by earthquake. The assessment found that 71% of the affected households are highly vulnerable and may therefore lack the resources to rebuild their houses. Over half of them have no regular source of income and 18% of the families are headed by women. 55% of the families are currently living in tents. Results of the assessment can be downloaded from: www.untj.org/?c=7&id=149
- During the REACT meeting on March 12th, the government has requested support with recovery efforts in Vanj, highlighting construction of homes as a priority.

Relief and Recovery Response

- REACT held a recovery planning meeting chaired by CoES on 18 February. Ten organizations, which either contributed to the relief efforts or are planning to undertake recovery activities, participated in the meeting. At the end, the meeting participants agreed on the next steps for the drawing up of a recovery plan, led by Government. The recovery plan shows that support for house construction is the biggest gap.
- The Agency on Construction and Architecture has developed the master plan for the new area where 200 families affected by the earthquake are expected to be resettled. The electronic version of the master plan can be downloaded at: <http://www.untj.org/?c=7&id=307>. The plan includes the following:
 - individual 0.1ha land plots, which include space for a 3 or 4 bedroom house for 200 houses;
 - a green buffer zone between the Pyanj river and the residential area;
 - specific location for school (for 380 pupils);
 - a land plot dedicated for health post, shop, pharmacy, mosque, market, hotel and a canteen. The site covers 44 hectares of land and 5 km of roads to be constructed.
- The Vanj district authorities are currently constructing 5 houses in this site. Works on foundations of 5 houses are currently on-going. The GBAO Oblast authorities pledged to construct 10 houses.
- Sughd province authorities provided 50 MT of cement for construction of houses.

- The Red Crescent Society of Tajikistan is providing construction materials for 10 houses. Global Partners is planning to construct 20 houses for the most vulnerable families.
- The Directorate on Construction of State Infrastructure is planning to build the school for 380 children and the health center in the settlement. Partial funding has been allocated according to the Directorate.



Vanj site master plan | Agency on Construction and Architecture, Tajikistan

- FAO is procuring 20 tons of wheat seeds, 150 tons of potato seeds and 50 tons of fertilizers to be distributed to the families whose livelihoods were affected. A list of beneficiaries is currently being drawn up.
- The table with detailed information on the total of relief assistance provided so far is attached in annex 1.

For more information please contact:

1. Colonel Sultonnazar Kholiknazarov, Deputy Chief of Staff, CoES: (992 37) 223 0183, 221 1331.
2. REACT Secretariat in Dushanbe: 37/1 Bokhtar Street, VEFA Business Center, 6th Floor, 604, Dushanbe, Tajikistan
Tel: (+992 47) 441 07 37
E-mail: react.dushanbe@undp.org

Annex 1 : Table of relief assistance provided

| Items | Total Assistance Provided (QTY) | Unit | Assisting Agency | | | | | | | |
|-----------------------------|---------------------------------|-------|------------------|--------------------|--------|-------------------|-------|-----------------|-------|-----|
| | | | RCST/ IFRC | Gov-t institutions | UNICEF | UNDP (OCHA funds) | GTZ | Global Partners | UNFPA | FAO |
| FOOD AND AGRICULTURE | | | | | | | | | | |
| High protein biscuits | 250 | box | | | 250 | | | | | |
| Macaroni | 5,000 | kg | | 5,000 | | | | | | |
| Oil | 5,000 | liter | | 5,000 | | | | | | |
| Plumpy nut | 50 | box | | | 50 | | | | | |
| Rice | 5,000 | kg | | 5,000 | | | | | | |
| Sugar | 5,000 | kg | | 5,000 | | | | | | |
| Wheat Flour | 5,000 | kg | | 5,000 | | | | | | |
| Wheat seeds | 20 | tons | | | | | | | | 20 |
| Potato seeds | 150 | tons | | | | | | | | 150 |
| Fertilizer | 50 | tons | | | | | | | | 50 |
| NFI/SHELTER | | | | | | | | | | |
| Bed linen | 1,140 | set | 640 | | 500 | | | | | |
| Blankets | 4,270 | pcs | 640 | | 500 | 2,000 | 630 | | 500 | |
| Candles | 500 | pcs | 500 | | | | | | | |
| Clothes (Second Hand) | 150 | bags | 150 | | | | | | | |
| Hoes | 98 | pcs | 98 | | | | | | | |
| Kitchen sets | 98 | set | 98 | | | | | | | |
| Matrasses | 640 | pcs | 640 | | | | | | | |
| Shovels | 98 | pcs | 98 | | | | | | | |
| Pillows | 438 | pcs | 438 | | | | | | | |
| Socks | 2,000 | pcs | | | | | 2,000 | | | |
| Thermos | 98 | pcs | 98 | | | | | | | |
| Construction tools | 98 | set | 98 | | | | | | | |
| Tents (winterized) | 205 | pcs | 47 | | | 158 | | | | |
| Tents (summer, for storage) | 7 | pcs | 7 | | | | | | | |
| Stoves | 291 | pcs | 133 | | | 158 | | | | |
| Coal | 20 | MT | | | | | | 20 | | |
| Tarpaulin | 500 | pcs | | | | | 500 | | | |
| Health | | | | | | | | | | |
| First aid kits | 22 | set | 20 | | 2 | | | | | |
| Reproductive health kits | 13 | set | | | | | | | 13 | |
| WASH | | | | | | | | | | |
| Buckets | 73 | pcs | 73 | | | | | | | |
| Hygiene sets | 573 | set | 73 | | | | | | 500 | |
| Jerry cans - 10L | 73 | pcs | 73 | | | | | | | |
| Soap | 500 | pcs | 500 | | | | | | | |
| Water purification tablets | 10,000 | pcs | | | 10,000 | | | | | |